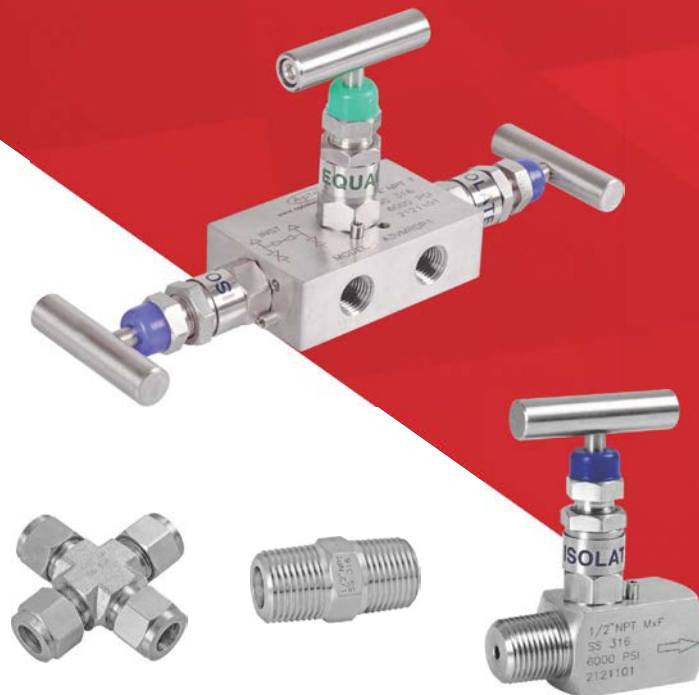




ISO 9001 : 2015 | PED 2014/68/EU | CRN

# Performance **UNDER PRESSURE**



Instrumentation Valves, Fittings & Accessories

## 2 VALVE Manifolds

Made in accordance with MSS - SP - 99. These valves are used for Isolation and drain of Instruments. Drain port can also be used for calibration.

**Materials:** SS 316, SS 316 L, Carbon steel, Duplex Steel, Super Duplex steel, Monel, Inconel, Hastelloy. Materials in accordance with NACE MR 0175 are also available on request.

**Standard process connection:** 1/2" NPT

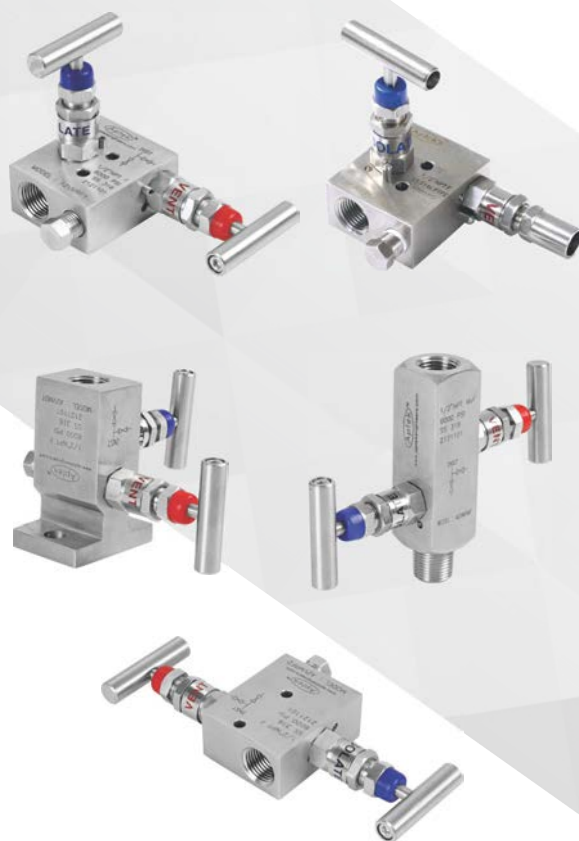
**Standard instrument connections:** 1/2" NPT or flanged

**Maximum working pressure:** Up to 690 bar/10000 PSI at 100°C.  
*Ask for pressure temperature chart for high temperature applications.*

**Gland packing:** PTFE / Graphite

Remote mounting & Direct mounting options are there with various models and types.

Standard construction is integral metal seat, soft seat valves are available on request.



## 3 VALVE Manifolds

Made in accordance with MSS - SP - 99. These valves are used with differential pressure measuring Instruments.

**Materials:** SS 316, SS 316 L, Carbon steel, Duplex Steel, Super Duplex steel, Monel, Inconel, Hastelloy. Materials in accordance with NACE MR 0175 are also available on request.

**Standard process connection:** 1/2" NPT, G1/2

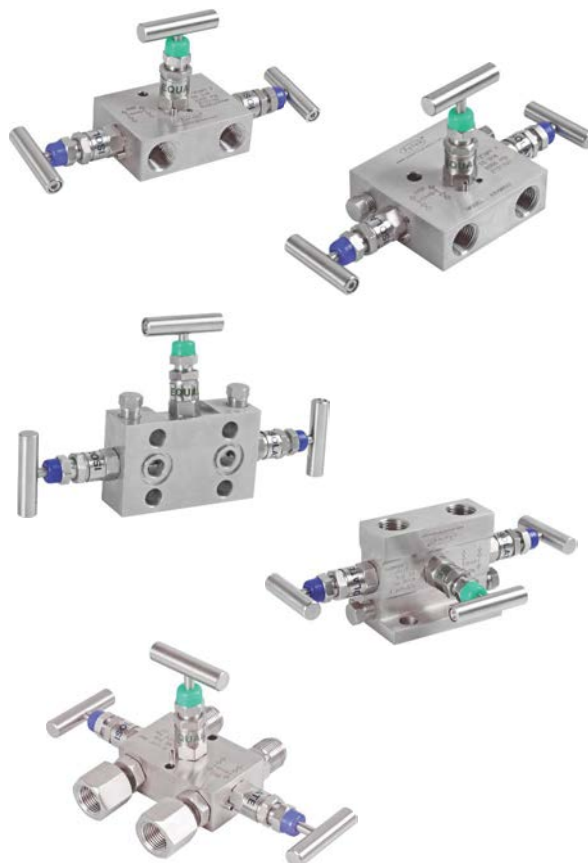
**Standard instrument connections:** 1/2" NPT, G1/2 or flanged

**Maximum working pressure:** Up to 690 bar/ 10000 PSI at 100°C.  
*Ask for pressure temperature chart for high temperature applications.*

**Gland packing:** PTFE / Graphite

Remote mounting & Direct mounting options are there with various models and types.

Standard construction is integral metal seat, soft seat valves are available on request.



## 2 VALVE Manifolds

Made in accordance with MSS - SP - 99. These valves are used for Isolation and drain of Instruments. Drain port can also be used for calibration.

**Materials:** SS 316, SS 316 L, Carbon steel, Duplex Steel, Super Duplex steel, Monel, Inconel, Hastelloy. Materials in accordance with NACE MR 0175 are also available on request.

**Standard process connection:** 1/2" NPT

**Standard instrument connections:** 1/2" NPT or flanged

**Maximum working pressure:** Up to 690 bar/10000 PSI at 100°C.  
*Ask for pressure temperature chart for high temperature applications.*

**Gland packing:** PTFE / Graphite

Remote mounting & Direct mounting options are there with various models and types.

Standard construction is integral metal seat, soft seat valves are available on request.



## 3 VALVE Manifolds

Made in accordance with MSS - SP - 99. These valves are used with differential pressure measuring Instruments.

**Materials:** SS 316, SS 316 L, Carbon steel, Duplex Steel, Super Duplex steel, Monel, Inconel, Hastelloy. Materials in accordance with NACE MR 0175 are also available on request.

**Standard process connection:** 1/2" NPT, G1/2

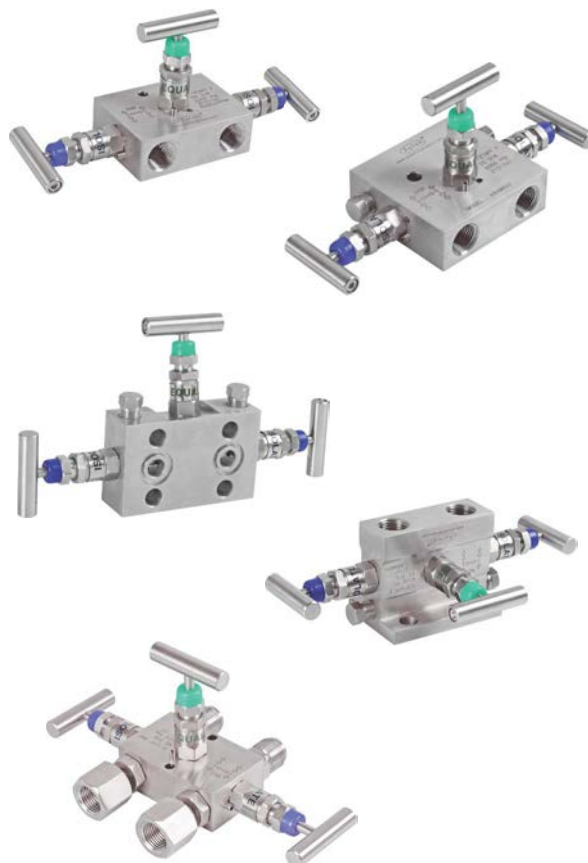
**Standard instrument connections:** 1/2" NPT, G1/2 or flanged

**Maximum working pressure:** Up to 690 bar/ 10000 PSI at 100°C.  
*Ask for pressure temperature chart for high temperature applications.*

**Gland packing:** PTFE / Graphite

Remote mounting & Direct mounting options are there with various models and types.

Standard construction is integral metal seat, soft seat valves are available on request.



# INSTRUMENT DOUBLE BLOCK & BLEED VALVES

Available in All needle and ball needle ball combination.

**Materials:** SS 316, SS 316 L, Carbon steel, Duplex Steel, Super Duplex steel, Monel, Inconel, Hastelloy. Materials in accordance with NACE MR 0175 are also available on request.

**Standard process connection:** 1/2" NPT or flanged

**Standard instrument connections:** 1/2" NPT

**Maximum working pressure:** Up to 10000 PSI/690 Bar at 100°C.  
*Ask for pressure temperature chart for high temperature applications.*

**Gland packing:** PTFE/ Graphite

Flanged configuration is also available.



## DISTRIBUTION HEADERS



Ball Valve Header



Needle Valve Header

# INSTRUMENT DOUBLE BLOCK & BLEED VALVES

Available in All needle and ball needle ball combination.

**Materials:** SS 316, SS 316 L, Carbon steel, Duplex Steel, Super Duplex steel, Monel, Inconel, Hastelloy. Materials in accordance with NACE MR 0175 are also available on request.

**Standard process connection:** 1/2" NPT or flanged

**Standard instrument connections:** 1/2" NPT

**Maximum working pressure:** Up to 10000 PSI/690 Bar at 100°C.  
*Ask for pressure temperature chart for high temperature applications.*

**Gland packing:** PTFE/ Graphite

Flanged configuration is also available.



## DISTRIBUTION HEADERS



Ball Valve Header



Needle Valve Header



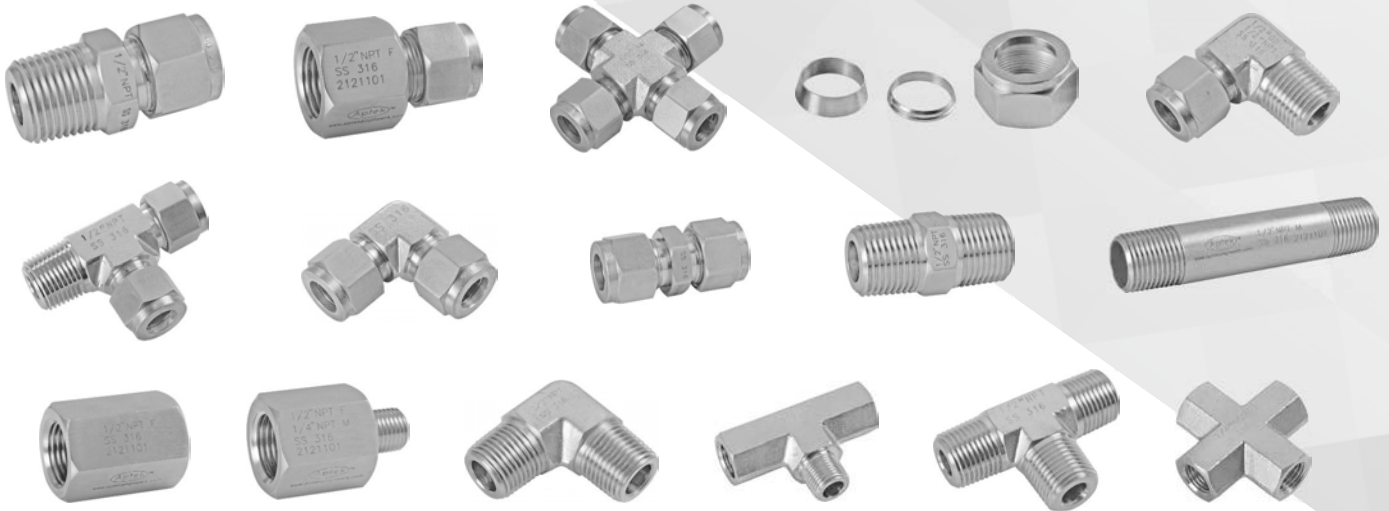
# INSTRUMENTATION TUBE AND PIPE FITTINGS

**Sizes:** Suitable for 1/8" to 1" and 3 mm to 25 mm tubes, NPT, BSPT, BSP and metric threads are available.

**Materials:** SS 316, SS 316 L, Carbon steel, Brass. Special materials are available on request.

**Pressure rating:** Up to 10000 PSI

**Testing standard:** ASTM F 1387



## CERTIFICATION



CRN



ISO 9001 : 2015



PED - Fittings



PED - Pressure Accessories -  
Valves & Manifolds

## TESTING FACILITY

Up to 60,000 PSI



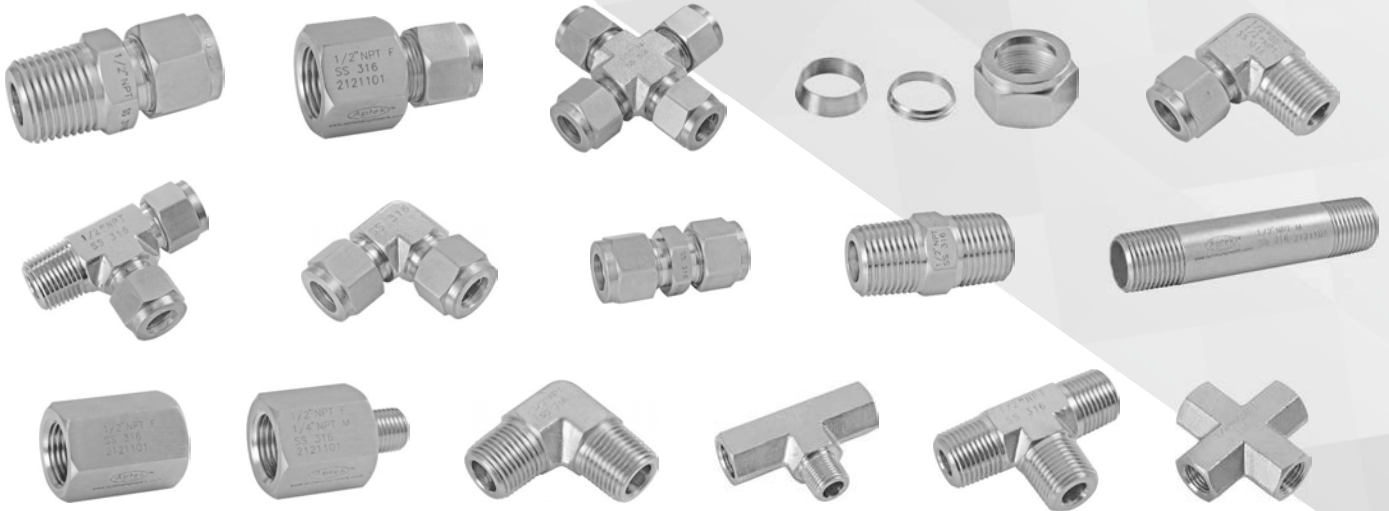
# INSTRUMENTATION TUBE AND PIPE FITTINGS

**Sizes:** Suitable for 1/8" to 1" and 3 mm to 25 mm tubes, NPT, BSPT, BSP and metric threads are available.

**Materials:** SS 316, SS 316 L, Carbon steel, Brass. Special materials are available on request.

**Pressure rating:** Up to 10000 PSI

**Testing standard:** ASTM F 1387



## CERTIFICATION



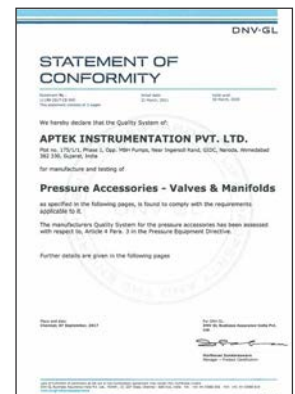
CRN



ISO 9001 : 2015



PED - Fittings



PED - Pressure Accessories -  
Valves & Manifolds

## TESTING FACILITY

Up to 60,000 PSI





ISO 9001 : 2015 | PED 2014/68/EU | CRN

### **Aptek Instrumentation Pvt. Ltd.**

411/5/2, 411/6, Kapasi Estate, GIDC, Naroda, Ahmedabad - 382 330, Gujarat, INDIA.

Ph : +91 - 79 - 22840081, 2284 3333, 2970 1065.

marketing@aptekeengineers.com, aptekeengineers@gmail.com, www.aptekeengineers.com